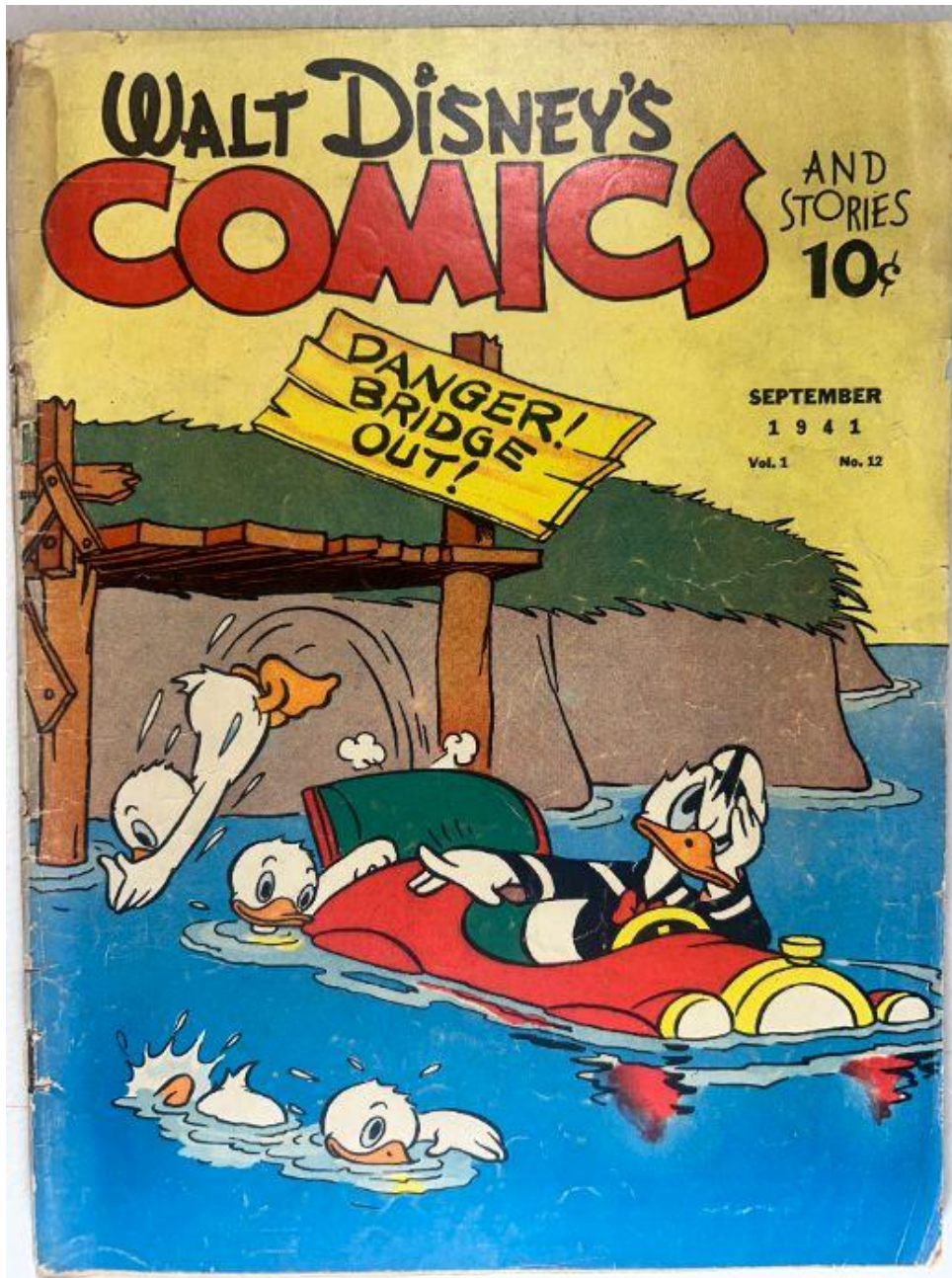


# ■ Walt Disney's Comics and Stories – September 1941

## Front Cover — Observations



### Photo Condition & Quality

Clear, well-lit, full-frontal image with accurate color representation. No glare, no cropping of edges. Fine surface texture and creases clearly captured.

## Overall Scene & Composition

- Donald Duck is shown driving a small red car off a broken wooden bridge, suspended mid-fall.
- Huey, Dewey, and Louie tumble head-first toward the water below, depicted with exaggerated motion lines.
- A wooden warning sign labeled “**DANGER! BRIDGE OUT!**” hangs overhead, rendered with visible stroke lines and woodgrain detail.
- Yellow sky provides a high-contrast background; blue water splashes with white accent strokes.
- Broken planks and jagged wood fragments emphasize the physical comedy typical of early Disney covers.

## Physical Condition Details

- Numerous deep **color-breaking spine stresses** extending horizontally into the yellow background.
- Several **long vertical reading bends** along the right edge.
- Surface exhibits **scattered abrasions**, revealing lighter under-paper.
- All corners rounded; **lower-left corner** has a small chip (~1–2 mm).
- **Right-edge tears** between 1/8–1/4", some penetrating into the artwork.
- Moderate soiling, especially across the yellow background and lower areas.
- Multiple pressure marks visible under angled viewing.

## Color & Printing Quality

- Vibrant reds and blues; yellow fields moderately faded with uneven toning.
- Sharp black outlines with no registration shift.
- Minor mottling in lighter areas.

## Paper & Structural Notes

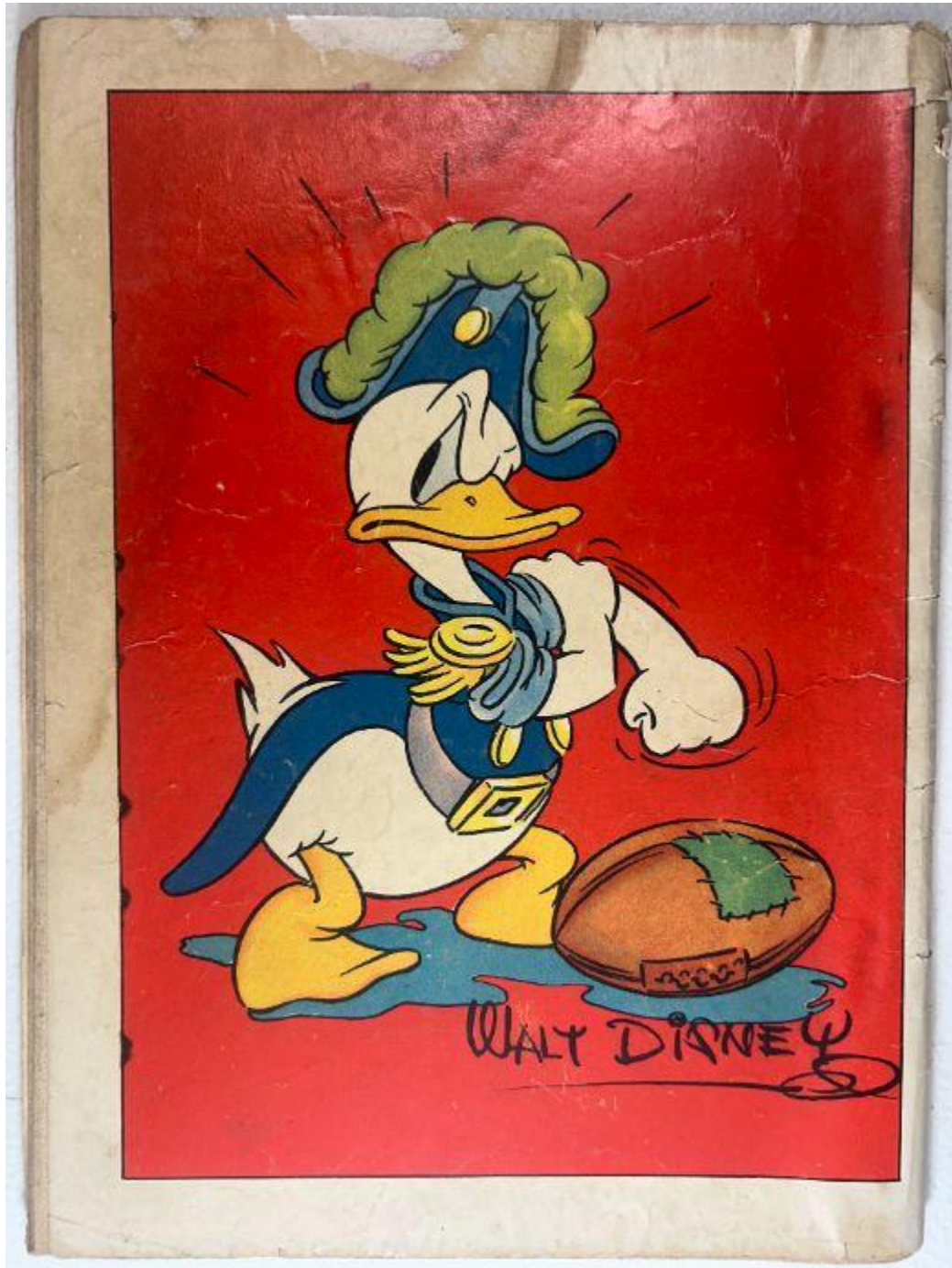
- Moderate oxidation near edges; paper fibers slightly raised in high-wear zones.
- No moisture rippling present.

## Overall Impression

A heavily worn but visually intact Golden Age cover with strong artwork clarity despite structural issues.

---

## Back Cover — Observations



### Photo Condition & Quality

Sharp, well-focused image with minimal shadowing. Slight reflection along left margin, but all details clearly visible. Good color accuracy for red field.

## Scene & Composition

- Large red background featuring Donald Duck in a formal blue uniform.
- A brown football sits near Donald's feet.
- The "Walt Disney" signature appears beneath the illustration.

## Physical Condition Details

- Several long **vertical and diagonal color-breaking creases**.
- Upper-left area has a **large abrasion patch** exposing fibrous paper.
- Spine-side edge is heavily rubbed with micro-chipping.
- Corners rounded with minor cracking.
- Numerous pressure marks visible in angled light.

## Color & Printing Quality

- Red background moderately faded; slight uneven darkening in some regions.
- Blue uniform retains strong saturation.
- Linework consistent; no ink offsetting.

## Paper Condition

- Even tan age toning across full surface.
- No signs of moisture intrusion.

## Overall Impression

A stable but heavily worn back cover with notable abrasion and creasing.

---

## Spine — Observations



### Photo Condition & Quality

Close-up image clearly captures spine curvature, splits, and surface fibers. No glare. Resolution sufficient to inspect damage around staples.

### Structural Details

- Pronounced **spine roll** shifting cover alignment to the right.
- Multiple **full and partial spine splits**, several fully penetrating to interior.
- **Exposed signatures** visible where splits widen.
- Paper loss along edges of breakpoints.

## **Abrasion & Wear**

- Severe color loss across entire spine.
- Fraying along fold with loose fibers and cracking.

## **Break Zones**

- At least three large break zones with structural openings.
- Lower break zone significantly affects staple stability.

## **Overall Impression**

A severely compromised spine showing extensive structural breakdown.

---

# Staples — Observations

## Photo Condition & Quality

Both staple close-ups are sharp and properly centered. Lighting highlights paper tears and metal oxidation without glare.

## Upper Staple



- Fully exposed due to spine splitting.
- Tearing surrounding staple hole.
- Light oxidation, no heavy migration.

## Lower Staple



- Substantial paper loss and irregular tearing at attachment point.
- Slight rust visible; metal appears structurally weakened.
- Attachment remains but with minimal surrounding paper support.

## Overall Impression

Upper staple marginally stable; lower staple significantly compromised.

---



# Page Color: cream to light tan

## Unified Interior Findings

### Photo Condition & Quality

Even lighting, consistent focus, and clear visibility of gutter, margins, art, and text across all photographed pages. No shadowing or color distortions. All pages photographed flat.

### Page Color

cream to light tan

## Unified Interior Findings

### *Artwork & Story Content*

- Includes multiple Mickey Mouse stories featuring domestic scenes, wooded landscapes, action sequences, and comedic interactions.
- Pluto sequences feature exaggerated poses, expressive motion strokes, and outdoor background details.
- A Robin Hood–inspired adventure includes castle silhouettes, forested environments, and costume-styled character renderings.
- One prose page accompanied by a single-color illustrated header.

### *Color & Printing Quality*

- Color inks retain strong saturation; reds and greens particularly stable.
- Halftone dots clean and consistent with 1940s Dell printing.
- Slight fading only on lighter yellow fields.
- No misregistration or doubling visible.

### *Paper Condition*

- Uniform oxidative tanning across all pages.
- Minor foxing in upper and outer margins.
- Slight fraying on some page edges.
- Mild age waviness but no moisture rippling.
- No folds, tears, writing, stains, or missing areas.

### *Structural Notes*

- Upper staple maintains firm attachment through all wraps.
- Lower staple shows stress creasing and minor tearing in gutter area.
- Page fibers intact and flexible; no brittleness.

### *Overall Impression*

The interior is clean, stable, fully complete, and visually strong despite normal Golden Age toning.



## **Scene & Composition**

- Left page shows nighttime panels with dramatic shading and train-headlight effects.
- Right page shows daytime scenes with grass, trees, and a home entryway.
- Clean, bold linework and stable color.

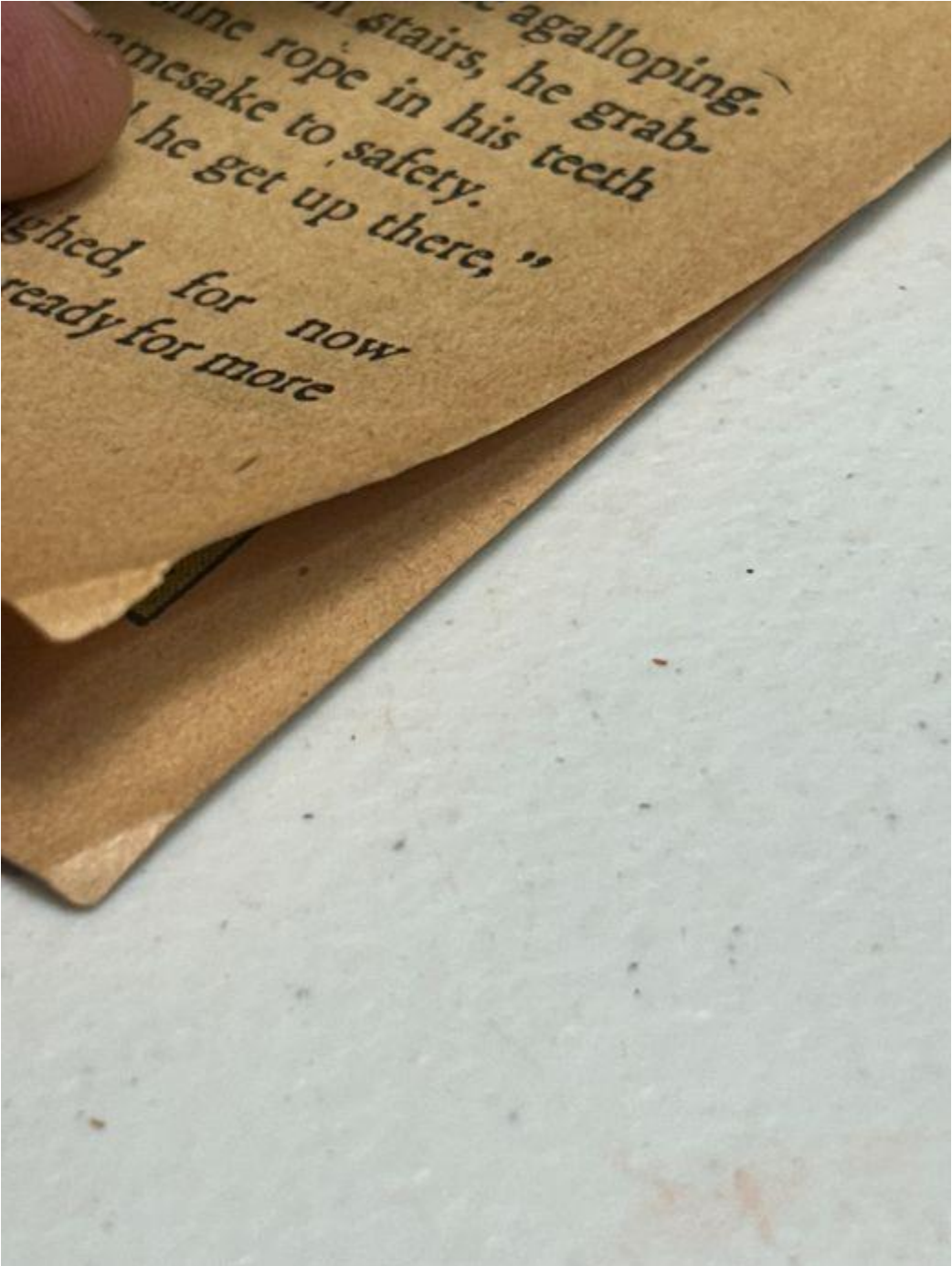
## **Physical Condition**

- Attached at both staples.
- Tearing around staple zones, consistent with spine deterioration.
- Even tanning; slightly darker along gutter fold.

## **Overall Impression**

A complete and visually stable centerfold with expected age wear.

# Brittleness Test — Observations



## **Photo Condition & Quality**

Close-up page-corner lift captured sharply with clear visibility of fibers and curvature.

## **Flex Behavior**

- Smooth bending of page corner without cracking or flaking.
- No whitening along stress line.

## **Paper Texture**

- Dry but cohesive.
- No signs of brittle fragmentation.

## **Overall Impression**

Advanced oxidation present, but paper remains flexible and non-brittle.